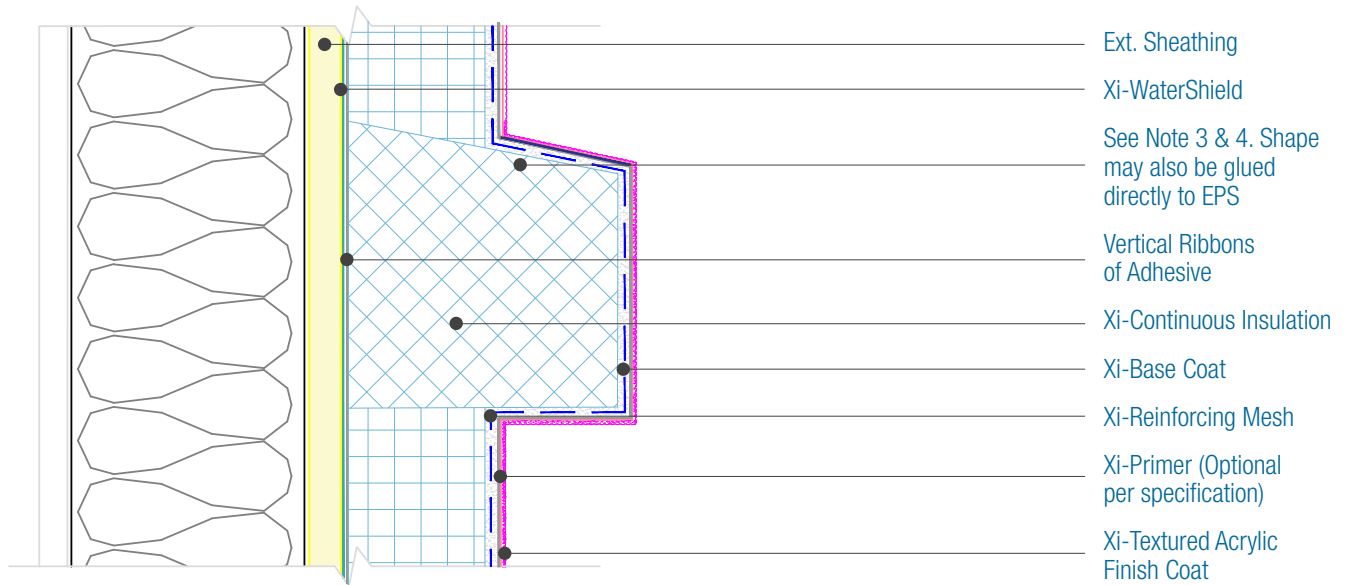




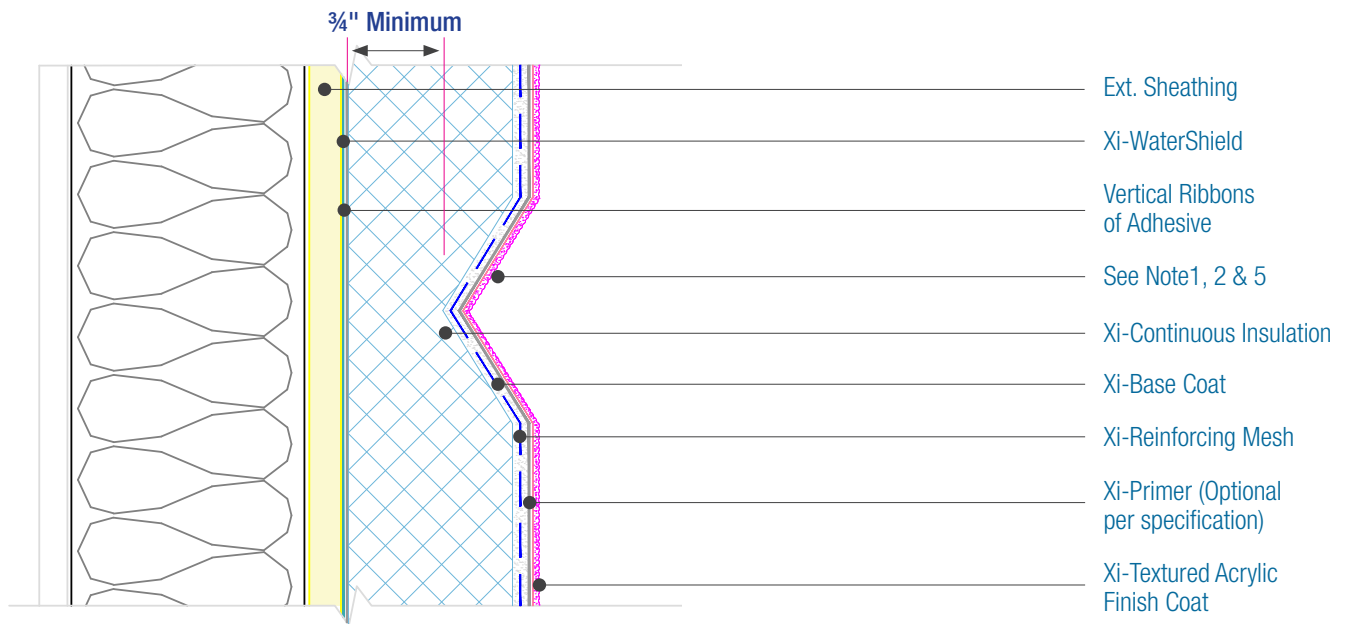
15262 Capital Port
 San Antonio, TX 78249
 1-833-899-0787
 facadesxi.com

WaterShield Xterior Insulation Typical Shape and Reveal

Date: 06-15-2021 | Detail. WSXI.I.6 v1



- Ext. Sheathing
- Xi-WaterShield
- See Note 3 & 4. Shape may also be glued directly to EPS
- Vertical Ribbons of Adhesive
- Xi-Continuous Insulation
- Xi-Base Coat
- Xi-Reinforcing Mesh
- Xi-Primer (Optional per specification)
- Xi-Textured Acrylic Finish Coat



- Ext. Sheathing
- Xi-WaterShield
- Vertical Ribbons of Adhesive
- See Note 1, 2 & 5
- Xi-Continuous Insulation
- Xi-Base Coat
- Xi-Reinforcing Mesh
- Xi-Primer (Optional per specification)
- Xi-Textured Acrylic Finish Coat

NOTES:

1. 3/4" of flat insulation board must remain after the reveal has been cut into the foam.
2. Do not place reveals where insulation boards abut.
3. Horizontal/Sloped surfaces greater than 2 inches of Foam shapes must be coated with Xi - WaterLock
4. Slope Minimums; Standing Snow areas - 6:12, No Standing Snow - 3:12
5. For small reveals, use Xi-Detail Mesh through reveals continuing a minimum of 2 1/2" on each side of the reveal and follow specification instructions.

DISCLAIMER: FACADESXI details are recommendations that should be used for guidance only. There may be equivalent means of installation that are not shown in FACADESXI assembly details. All FACADESXI products shall be installed in accordance with FACADESXI product datasheets and all applicable building codes and industry standard practices. The design, engineering and final details incorporating any FACADESXI product are the sole responsibility of the project design professional. FACADESXI is not responsible for determining the acceptability and/or applicability of any FACADESXI product or detail for any specific project or condition. FACADESXI disclaims all liability for improper installation, workmanship, or design by a third-party. EXCEPT FOR ANY EXPRESS REPRESENTATIONS AND WARRANTIES BY FACADESXI, ALL IMPLIED WARRANTIES OF ANY KIND, INCLUDING BUT NOT LIMITED TO WARRANTIES OF MERCHANTABILITY OR FITNESS FOR A PARTICULAR PURPOSE OR COMPLIANCE WITH LAWS OR GOVERNMENT RULES OR REGULATIONS APPLICABLE TO THE PROJECT, ARE HEREBY DISCLAIMED. FACADESXI's website should always be consulted for the latest version of any details and/or product information. Contact FACADESXI for any technical assistance.